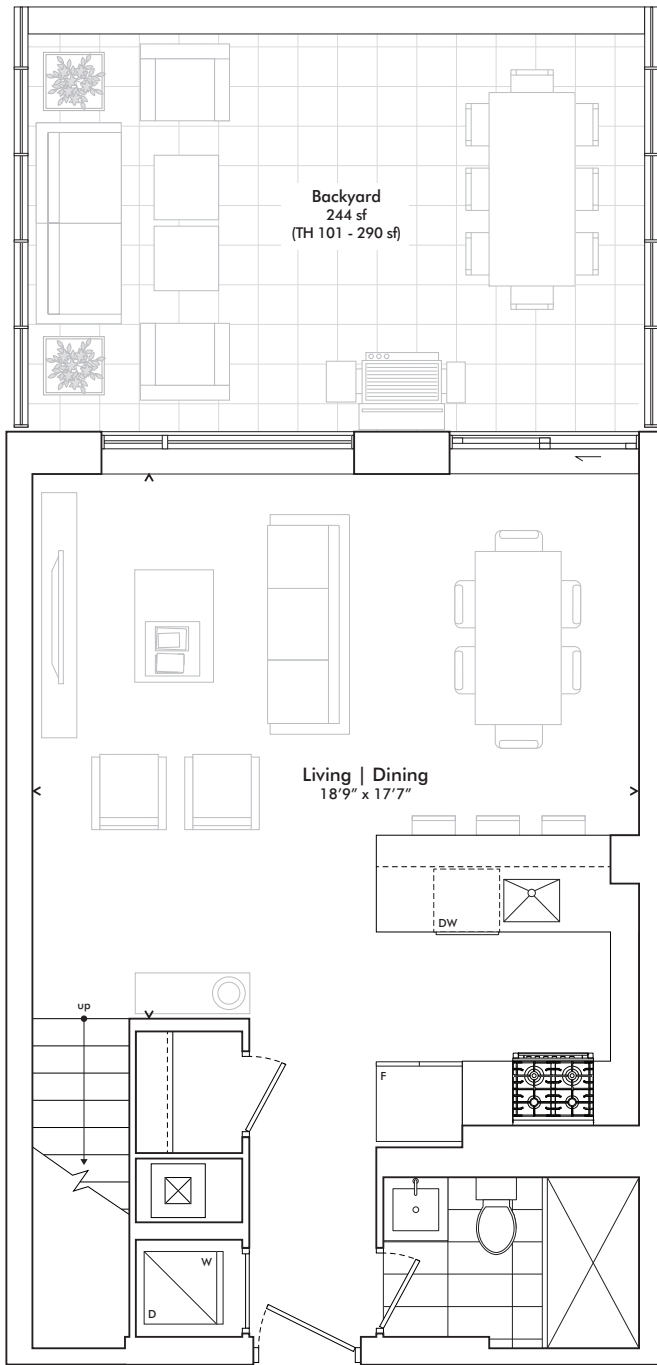


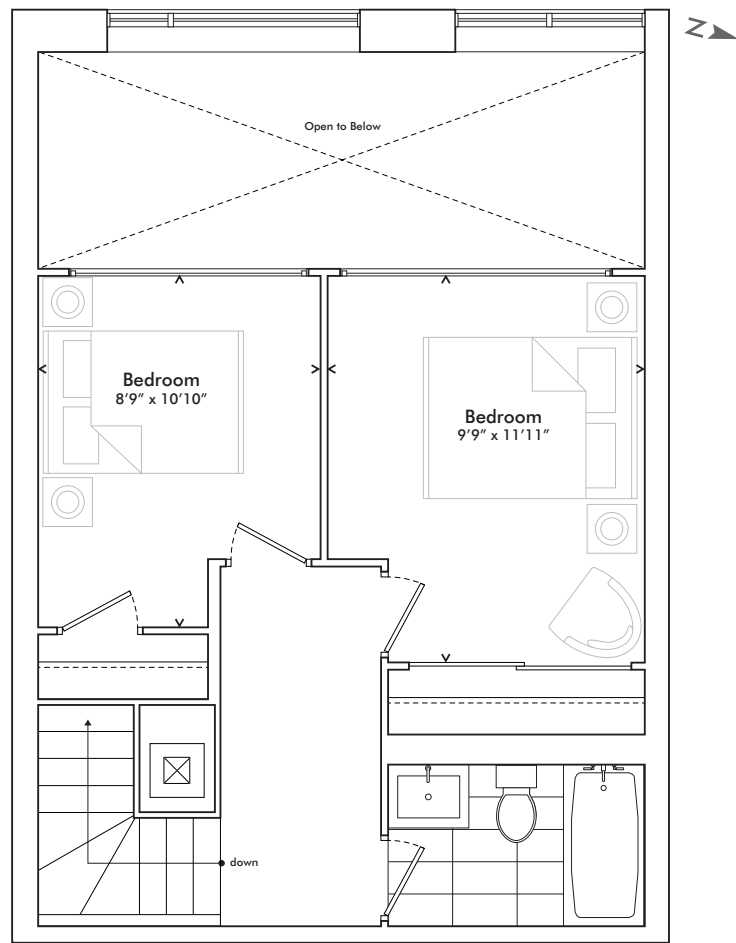
# Two Bedroom

980 SF *plus* 244 SF BACKYARD

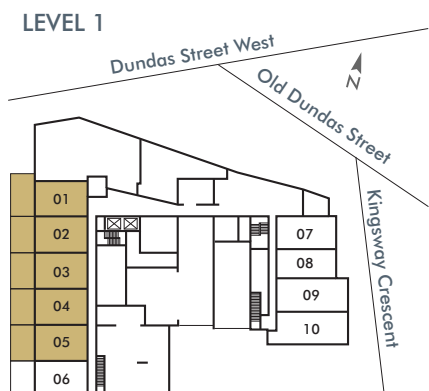
TOTAL 1,224 SF



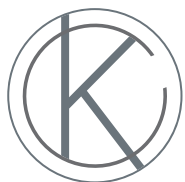
MAIN LEVEL



UPPER LEVEL



TH1 1009 SF *plus* 290 SF BACKYARD  
TOTAL 1,299 SF



**KINGSWAY**  
CRESCENT

In order to comply with building site conditions and municipal, structural, vendor and/or architectural requirements, actual living areas may vary from floor area stated. Floor area has been measured and may vary in accordance with Bulletin #22 published by the Taron Warranty Corporation. Purchasers acknowledge that the dwelling units with terraces may contain an interior step up for access to such terraces. Furnishings are for display purposes only. All sizes, dimensions and specifications are subject to change without notice. E.&O.E. Kingsway Crescent May 2020

**harhay**developments